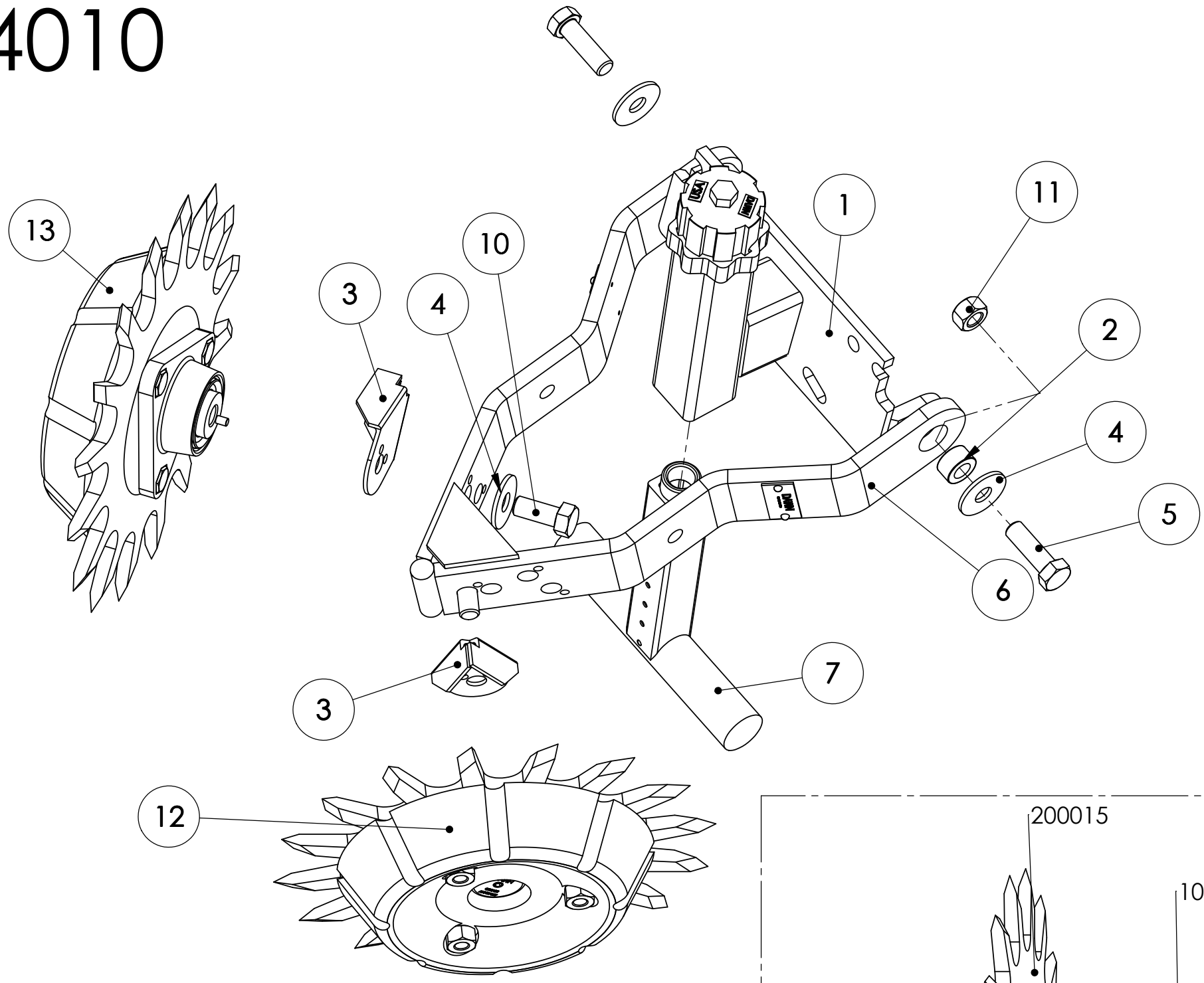
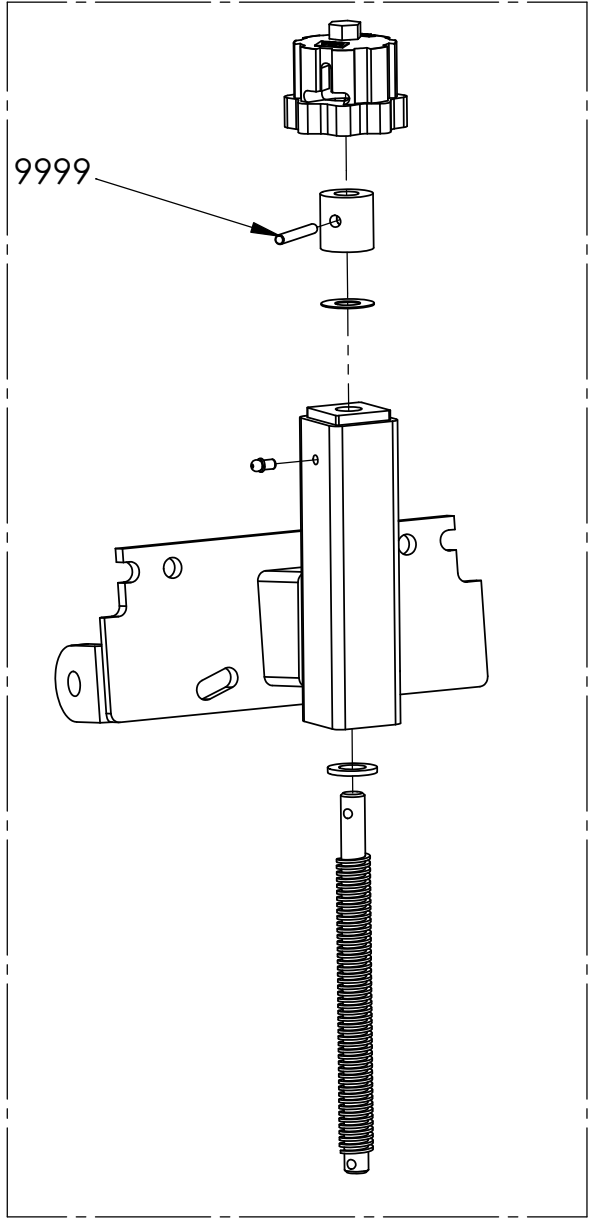
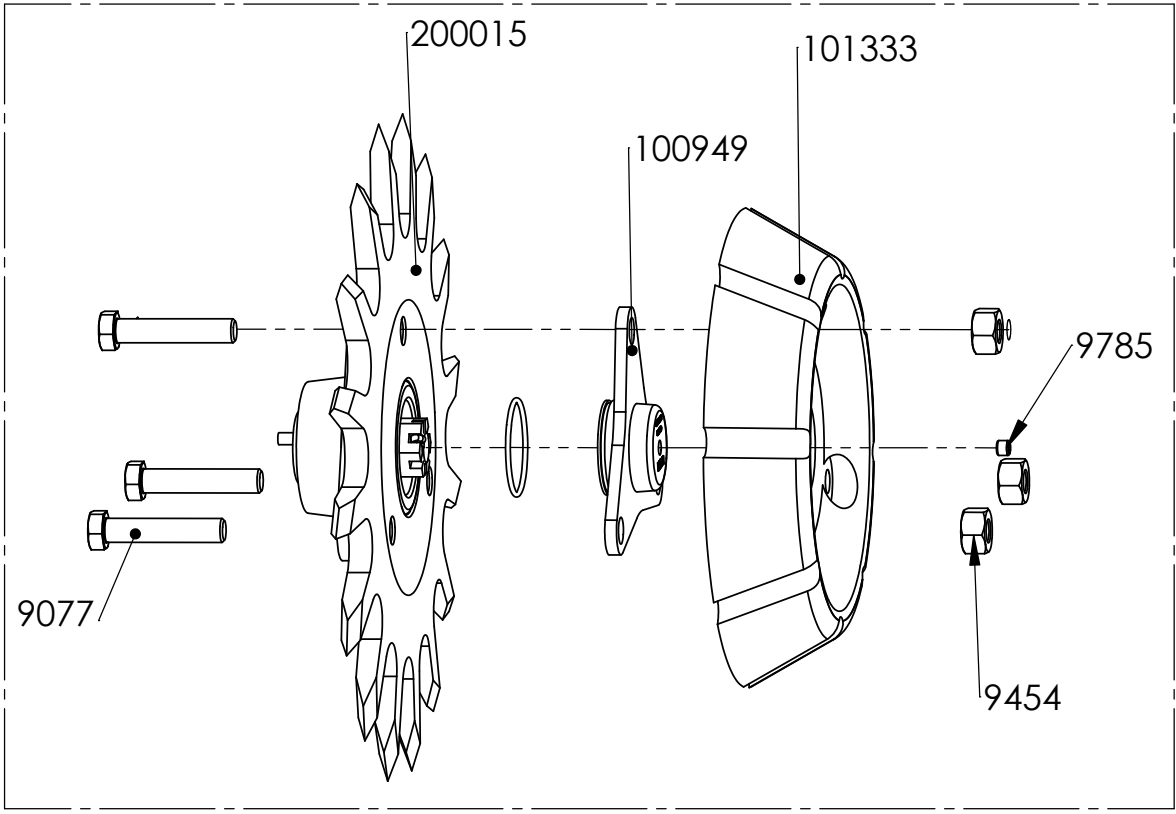


# 4010

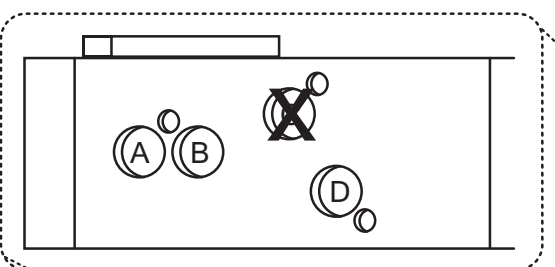


ITEM NO.	PART NUMBER	DESCRIPTION	QTY.
1	200542	TRASHWHEEL MNT ASSY-4010	1
2	100183	BUSHING, 9/16 LONG, HDN, ZN	2
3	100882	STRIPPER, FORMED	2
4	9141	FW 5/8 X 1.75 X .13 HARDEN/ZN	4
5	9078	HHCS 5/8-11 X 2 GR8 ZN	2
6	200515	WELDMNT, 4010 ARM	1
7	200510	WLDMNT, 4010-6.25 T STEM	1
8	100043	NAMEPLATE, DAWN	2
9	9041	RIVET, DRIVE 1/8 DIA X 3/8 LG	4
10	9101	HHCS 5/8-11 X 1-1/2 GR8 ZN	2
11	9142	NUT 5/8-11 GR5ZN ALLMETL LOCK	2
12	TW ASSEMBLY LH		1
13	TW ASSEMBLY RH		1





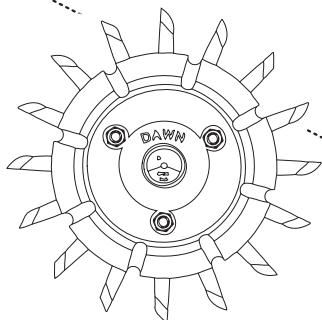
For the 4010 Floating Row Cleaner to function properly, it must be assembled in the correct configuration. This guide will detail the correct orientation of the floating support arm, and the proper choice of bolt holes to use for the two types of Trashwheels. Please call our office if you have any additional questions at **800.554.0007**



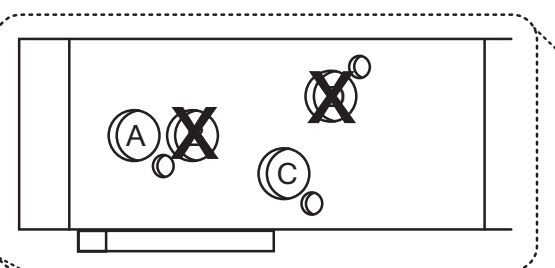
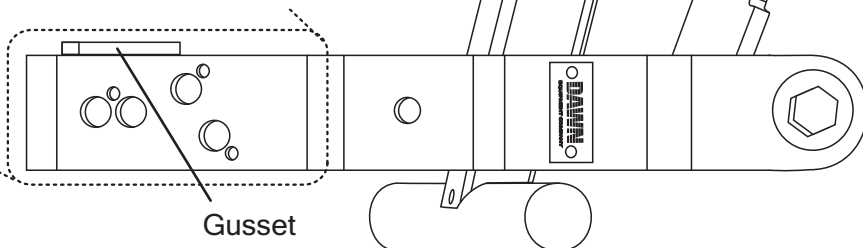
For the 14" wheel, begin by orienting the support arm with gusset located on the top side. Then bolt the arm to the mounting bracket.

To set wheels so that they are **INTERSECTING**, use **HOLE B** on both sides of the arm.

To set the wheels so that they run **OFFSET**, Use **HOLE A** and **HOLE D**. You should run half the rows in one direction, and the other half in the opposite direction.

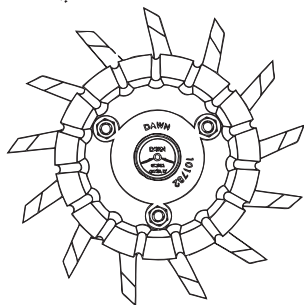


**DAWN PT 200015**  
14" Straight Wheel + Depth Band



For the 12.75" wheel, begin by orienting the support arm with gusset located on the bottom side. Then bolt the arm to the mounting bracket.

The 12.75" wheels may only be run in the **OFFSET** position. Use **HOLE A** and **HOLE C**. You should run half the rows in one direction, and the other half in the opposite direction.



**DAWN PT 101550**  
12.75" Swept Back Wheel + Depth Band

